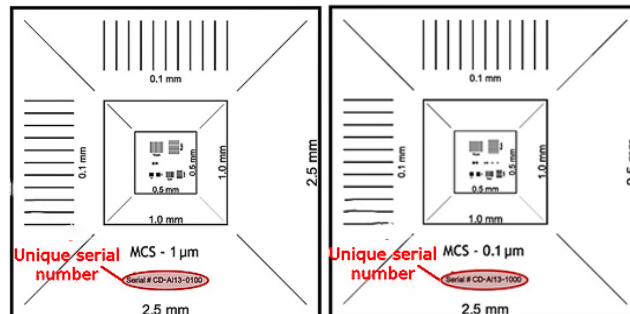




## EM-Tec MCS-1-XY & MCS-0.1-XY Magnification Calibration Standards



Product numbers: #31-T31020-U, #31-T31020-1, #31-T31020-2, #31-T31200-6, #31-T31020-8  
Product numbers: #31-C31030-U, #31-C31030-1, #31-C31030-2, #31-C31030-6, #31-C31030-8  
Product numbers: #31-T32040-U, #31-T32040-1, #31-T32040-2, #31-T32040-6, #31-T32040-8  
Product numbers: #31-C32050-U, #31-C32050-1, #31-C32050-2, #31-C32050-6, #31-C32050-8

### Introduction

The EM-Tec MCS-XY Magnification Calibration Standards are intended for magnification calibration of a range of microscopes, including SEM, Auger, ESCA, XPS, SIMS, FIB, AFM, SPM and reflected LM. Adjacent line patterns in X and Y directions are used for calibration and critical dimension measurements. Available with two range of features sizes and either traceable of individually certified versions. The EM-Tec MCS-XY standard offer many advantages over other calibration standards:

- All features in a single ultra-flat plane
- Adjacent line patterns in X and Y direction
- Constructed from non-outgassing materials (metal on silicon)
- Excellent signal to noise ratio
- Fully conductive materials
- Compatible with both SE and BSE
- Wider range of features to accurately calibrate low to high magnification ranges
- Can be cleaned with plasma cleaning
- Accuracy 0.7% or better
- Cost efficient
- All standards include a certificate

### Construction of the EM-Tec MCS-1-XY and MCS-0.1-XY calibration standard

The EM-Tec MCS-XY magnification calibration standards are manufactured using state of the art MEMS manufacturing techniques. For improved planarity, an ultra-flat Si substrate with deposited chromium and gold features is used. The features size ranges from 2.5mm down to 100nm on a single ultra-flat compact standard. High contrast 50nm thick chromium is used for the larger features down to 2.5μm. For the smaller features, from 1μm to 100nm, 50nm gold over a 20nm chromium base is used. This ensures excellent signal levels at all magnifications. Feature sizes on the Em-Tec MCS-1TR-XY and EM-Tec MCS-1CF-XY are:

- 2500, 250 and 2.5μm
- 1000, 100, 10 and 1μm
- 500 and 5μm





Features sizes on the EM-Tec MCS-0.1TR-XY and EM-Tec MCS-0.1CF-XY are:

- 2500, 250, 2.5 and 0.25 $\mu\text{m}$
- 1000, 100, 10, 1 and 0.1 $\mu\text{m}$
- 500, 5 and 0.5 $\mu\text{m}$

Each standard comes with a unique identification number consisting of a wafer ID and a position ID.

### Traceability and certification

The **traceable version** of the EM-Tec MCS-XY standard are produced by measuring randomly selected, 5 individual standards per wafer against a NIST measured standard. The average of measurements determines the level of uncertainty. By method of fabrication, the remaining standards on the same wafer are therefore traceable. Each standard comes with a wafer level certificate of traceability with the calibration results.

The **certified** EM-Tec MCS-XY magnification calibration standards are individually calibrated against a NIST measured standard. The uncertainty of the individually certified standards is better (lower) than the traceable standards. Each individually calibrated standard comes with a unique calibration certificate.

### Using the EM-Tec MCS-XY standards

The EM-Tec MCS-XY standard have been designed to cover 4 orders of magnitude in magnification. The largest feature for the lowest magnification is 2.5mm. Bring the 2.5mm square in full view. By doubling the magnification, the next feature is visible. With four steps the center features come in view; starting at 10 $\mu\text{m}$  and ending at 100nm. By choosing the suitable feature size, the complete magnification range from 5x to 200,000x can be calibrated with the EM-Tec MCS-0.1-XY. (5x to 20,000x for the EM-Tec MCS-1-XY.)

### Cleaning the EM-Tec MCS-XY standards

Try to use the same area for focusing and optimizing the SEM before measurements. This will minimise contamination of other surface areas on the standard. When it becomes necessary to clean the EM-Tec MCS-XY standard, follow these guidelines:

- Remove dust and other loose particles with compressed dry filtered inert gas (nitrogen). As an alternative a duster with compressed gas can be used, but be careful not to freeze the surface.
- Rinse with distilled water followed by a rinse with isopropanol and let dry. Avoid liquids that leave a residue.
- For hydrocarbon residues (contamination) and finger prints it is best to use a gentle oxygen plasma cleaner.
- **Do not use mechanical methods such as brushing, scrubbing or polishing.**

### Certification end date

There is no end date on the certificates for the EM-Tec MCS-XY. Due to the construction of Cr and Au on Si, the products are considered chemically stable under normal conditions of use. Since the standards are not mechanically touched, the only deterioration is contamination. We therefore expect a lifetime of this standard up to 10 years and beyond in clean systems. The re-certification period should be determined by the end-user depending on use, storing, handling and the general condition of the standard. If the standard is subject to a catastrophic event which damages the standard, it needs to be replaced.

A re-calibration service is not offered for this certified calibration standard; individual re-certification is substantially more expensive than a new certified standard. Recalibration or re-certification can only be performed by purchasing a new MCS standard.

## TSB 31-T3100 EM-Tec MCS-1 and MCS-0.1 magnification calibration standard 2015-12-16 Revision 3

